

A hand is shown interacting with a futuristic digital interface. The interface features several data visualization elements: a gauge chart showing 'Renewable share in FY24 (Forecast)' at 85%, a bar chart titled 'Top 10 Sites by electricity consumption', and several data cards showing values like '293,363 MT CO2' and '1,752,172 MT CO2'. The background is a blurred, bokeh-style image of lights.

# Don't be left behind

## Leverage Technology to Unlock the Potential of Your Buildings

Brett Smith

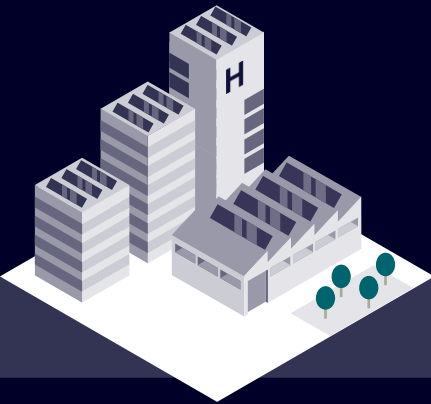
Head of Digital & Software - GB&I

# Our Vision for the Future

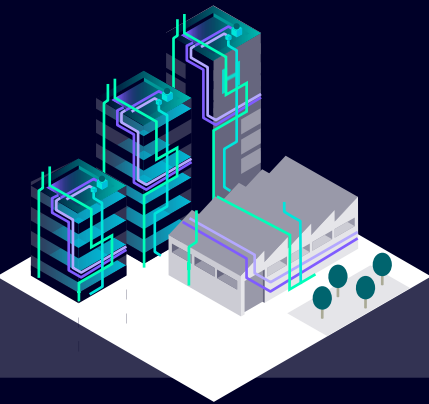
## The Human-Centric, Autonomous Building



**Traditional building**



**Automated building**



**Smart building**



**Human-centric, autonomous building**



Complex integration of new technologies

On-site management solutions

Predictive & prescriptive maintenance

as-a-Service models

Siloed control of building services

Reactive on-site maintenance

AI-enabled remote operations

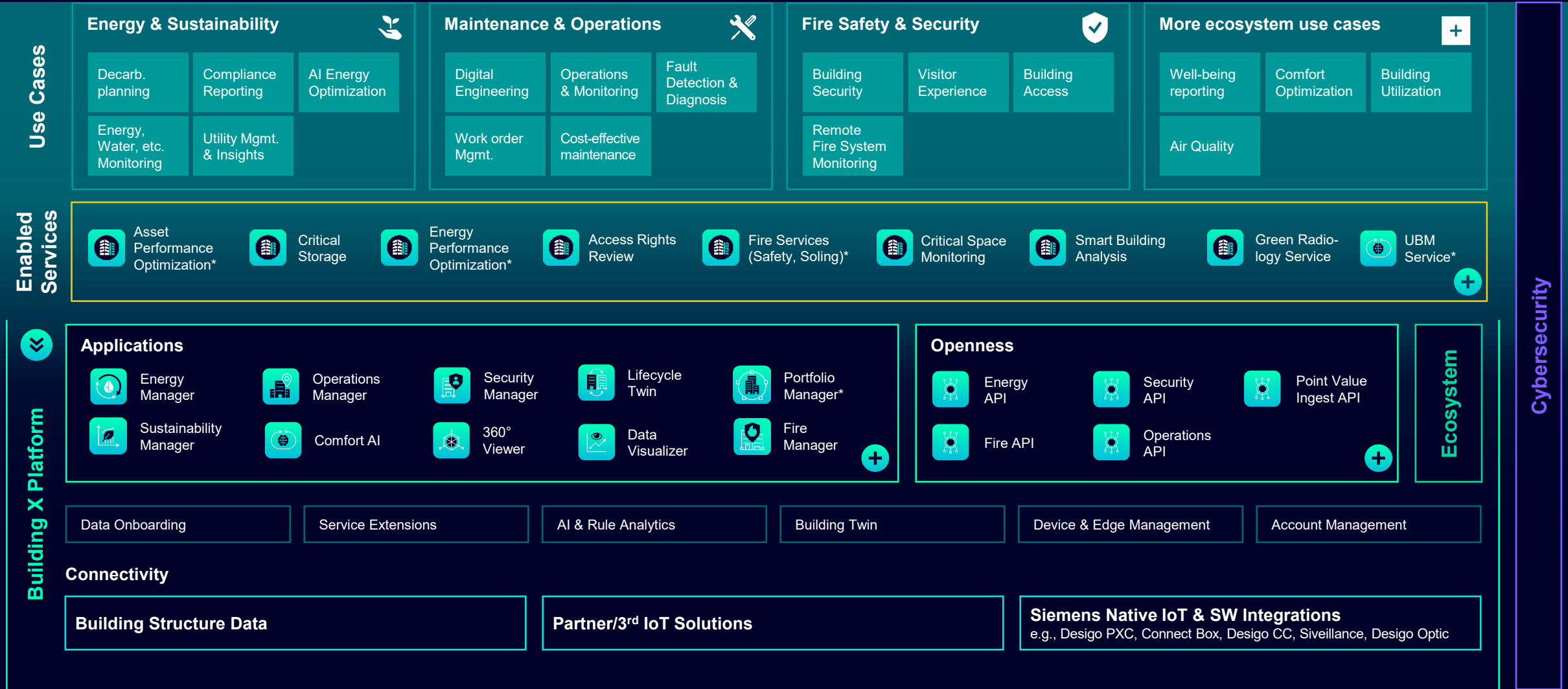
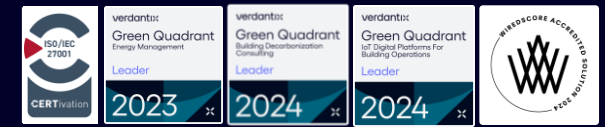
Simple & easy integration of new tech

# The foundation for autonomous buildings



**Building X**  
Autonomous  
Sustainable  
Profitable

# Building X An Open Platform



Any field discipline & device



Any building architecture & vertical

# Key Use Cases Across Domains



## Sustainability & Compliance

- Carbon footprint tracking & reporting
- Regulatory compliance automation
- Climate adaptation modeling
- Environmental impact assessments



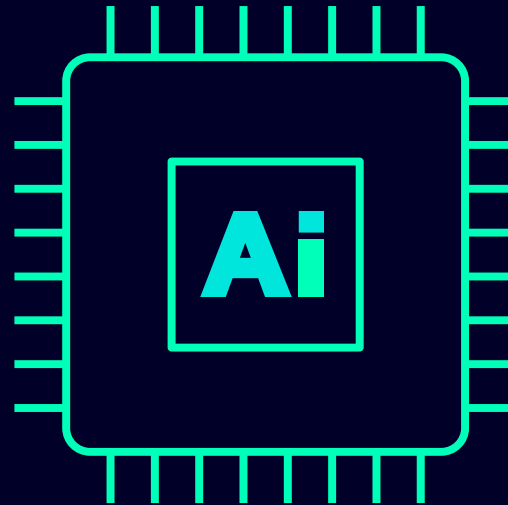
## Energy & Environmental Efficiency

- HVAC & lighting optimization
- Energy forecasting & demand response
- Microgrid & EV charging coordination
- Leak detection, water & waste optimization
- Indoor air quality & thermal comfort monitoring



## Data & Digital Twin Intelligence

- Real-time system integration (IoT, BIM, IT/OT)
- Digital twin & simulation
- Root cause analysis & scenario planning
- Cybersecurity monitoring



## Security & Safety

- Video analytics & facial recognition
- Intrusion & anomaly detection
- Smart access control
- Emergency event detection (fire, etc.)



## Predictive Maintenance & Asset Management

- Equipment health monitoring
- Predictive maintenance scheduling
- Structural & envelope diagnostics
- Lifecycle cost analysis
- Smart fault detection & diagnostics (FDD)



## Occupancy, Space & Experience

- People flow & occupancy analytics
- Smart workspace allocation
- Wayfinding & navigation
- Chatbots & digital assistants
- Sentiment & engagement analytics

# Building X transforms the way we live and work



**10%**

more net operating income through digitalization

Up to **30%**  
energy savings

**24/7**

transparency of live & historical events

We help you to create sustainable, autonomous, and profitable buildings.

# The future of buildings Autonomous, sustainable, profitable

## Shopping List – Use Case

The dashboard features a top navigation bar with the Siemens logo and 'Home' text. Below this, a personalized greeting 'Hello Brett' is displayed. The 'My apps' section contains 17 application tiles: Operations Manager, Energy Manager, Security Manager, Visitor Manager, Comfort AI, 360° Viewer, Fire Manager, Sustainability Manager, Data Visualizer, Accounts, Devices, Data Setup, Activity Log, API Manager, Lifecycle Twin, Rules, Occupancy, and Environmental and Air Quality. The 'Portfolio overview' section includes five summary cards: Subscriptions (0 Active), Sites (26 Sites, 2 Campuses, 24 Buildings), Devices (7 Offline, 1 Pending updates), and Point of contact (Building X Demo, support.eu.j-bt@siemens.com). The bottom section, 'All sites', shows a world map with location markers and a legend for 'Map' and 'List' views.

# The future of buildings

## Autonomous, sustainable, profitable

UP TO  
**30%** Energy savings through  
AI-driven optimizations

### Crawl

**Energy efficiency monitoring and analysis**  
Energy KPI monitoring, forecasting and anomaly detection



**Energy Manager**

### Walk

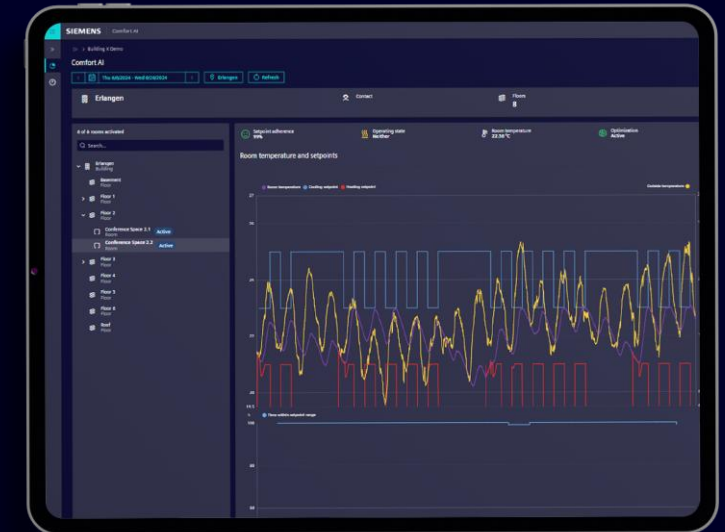
**Portfolio monitoring and reporting**  
Analyze performance, track decarbonization targets, audit-proof reporting



**Sustainability Manager**

### Run

**Autonomous optimization**  
Launch AI-driven continuous improvements



**Comfort AI**

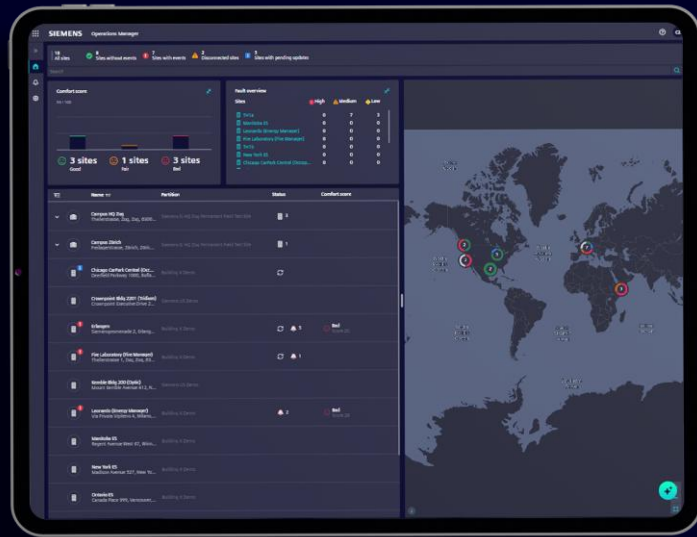
# The future of buildings

## Autonomous, sustainable, profitable

UP TO **10%** More net operating income through digitalization

### Crawl

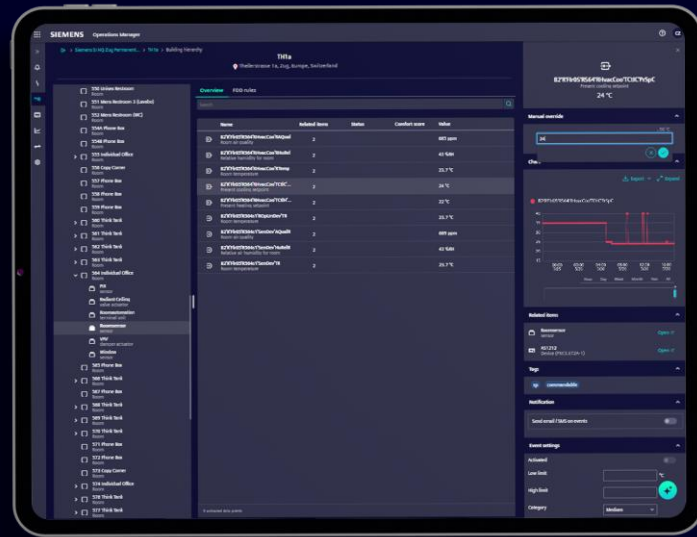
**Operational awareness**  
Gain visibility into key KPIs with prioritized alarm and event monitoring across sites.



 **Operations Manager**

### Walk

**Intelligent diagnostics** Leverage fault detection and diagnostics to accelerate root cause analysis and reduce downtime.



 **Operations Manager**  
With FDD & Data Visualizer

### Run

**Accelerated resolution**  
Automate work order creation and remotely command equipment to solve issues faster.



 **360° Viewer**

# Ask Building X

## In-Product Generative AI Assistant

- ✓ **User Guide Agent**
- ✓ **Lifecycle Twin Documentation Agent\***
- ✓ **Fault Analysis Agent\***
- ✓ **Data Visualization Agent\***

\*Roadmap Item

### Ask Building X

.....

5. To further interact with the diagram, you can explore additional options like sorting by location or minimizing intersects for better readability.

6. For a detailed analysis, you can deep-dive into a building's consumption by using the Details card, which allows you to compare individual nodes over time for consumption, costs, or CO2 emissions data.

Remember to configure at least one meter and a submeter, ensure the meters contain values, and check that the filters applied do not prevent the required data from being displayed if the diagram does not show data."

[Building X Energy Manager Online Help](#)



Ask something...

AI-generated content may be inaccurate [Generative AI Service Terms of Use](#) [Generative AI Chat Privacy Information](#)

Co-Pilot ? X

Riccardo OM (BX UX)

07:00, 17/03/23

What is the sensor for humidity?

**BX Copilot**  
09:00, 10/06/24

The specific sensor used for measuring humidity is the EE211.

[EE211doc.pdf](#) ↓

Ask something here ↑

# Building X: Proven Success in Action and Expanding

## End User



## Partner Channel




# Let's connect

**Brett Smith**

Head of Digital & Software GB&I

 [smith.brett@siemens.com](mailto:smith.brett@siemens.com)

 +44 7921 246 442

