

Welcome To Rothamsted Campus

**Nicole Sadd
CEO**

Our Estate





The Partners

Lawes Agricultural Trust

- Freehold owner
- Charitable trust
- Commercial & residential accommodation
- Grant funder to RRes
- Supporting spin-outs
- Capital developments on campus

Rothamsted Research

- National capability – scientific research
- Charitable trust
- Manages estate operations
- One of core BBSRC national capabilities

Rothamsted Enterprises

- Commercial JV – LAT, RRes & BBSRC
- Commercial accommodation
- Bringing research and innovation together
- Aid facilitation of commercialisation of science

UKRI - BBSRC

- UK public funding body
- Key funder to RRes

Herts IQ

- Public funding to increase economic impact
- Public funding to deliver growth and job creation

Rothamsted Enterprises

- Set up in 2015 as the joint venture to operate the campus
- Can undertake activities that other shareholders could not
- Positioned in line with the industrial strategy to support innovation in the UK
- Positioned in Hertfordshire to deliver economic growth to the area and support the delivery of an Enterprise Zone.
- Created a calendar of events to drive opportunities for innovation and facilitate interactions on and offsite
- Support scale up, growth and exit from site

Achievements and Impact to date



Funding
£3.2 million



Impact Support
Business supported through **134 interactions**



Management
Development innovation space **from 2106 sqm to 3224 sqm**



Tenants
The ecosystem has **grown from 11 to 36** business, with a **91% occupancy**



Impact Jobs
321 jobs with an annual impact figure of **£16 million** to the local economy



Innovation Funding
Delivered the **BBSRC grant of over 900K** which has led to investment being secured from public and private sources of **£81,094, 455 by companies**



Skills, equipment and knowledge
Supported Rothamsted Research to launch **Rothamsted Scientific Services (RoSS)** with sales, marketing and management expertise from REL to drive revenue into Rothamsted Research.

Our Portfolio



What our Excellent Innovation System offers



- 1) A range of spaces
- 2) Access to the brightest minds, specialist kit and capability
- 3) Access to private and public funding
- 4) Focusing on Innovation, start up and spin out companies
- 5) At the heart of a strong network to the wider science and innovation landscape likeminded innovators, funders and entrepreneurs
- 6) Business and grant support services offered
- 7) A regular turnover of businesses on site
- 8) An excellent reputation in science and innovation
- 9) Reduced barriers of operations

Added Value for our Campus Community

- Use of Rothamsted Scientific Services
- Collaborative R&D project with a Rothamsted academic
- Collaborative project with another Rothamsted business
- Use of services at another BBSRC Innovation campus
- Collaborative R&D project with an Innovation campus academic
- Collaborative project with another innovation campus business



Rothamsted Enterprise Objectives

OBJECTIVE 1

To facilitate beneficial relationships for the Rothamsted community locally, nationally and internationally, providing a National Capability of unique opportunities for collaboration, business growth and investment.



OBJECTIVE 2

Facilitate access to academic expertise as well as innovation infrastructure and wider capabilities to support business start-up and growth whilst promoting and connecting to investment opportunities.



OBJECTIVE 3

To promote the innovation and impact being delivered by the Rothamsted Community to ensure that Rothamsted is recognised as a key destination for businesses, investors, entrepreneurs, and researchers.



OBJECTIVE 4

To ensure Rothamsted is recognised as a key stakeholder and influencer in the local and national innovation economy, playing a key role in encouraging and supporting the need for innovation infrastructure to grow and develop the sector.



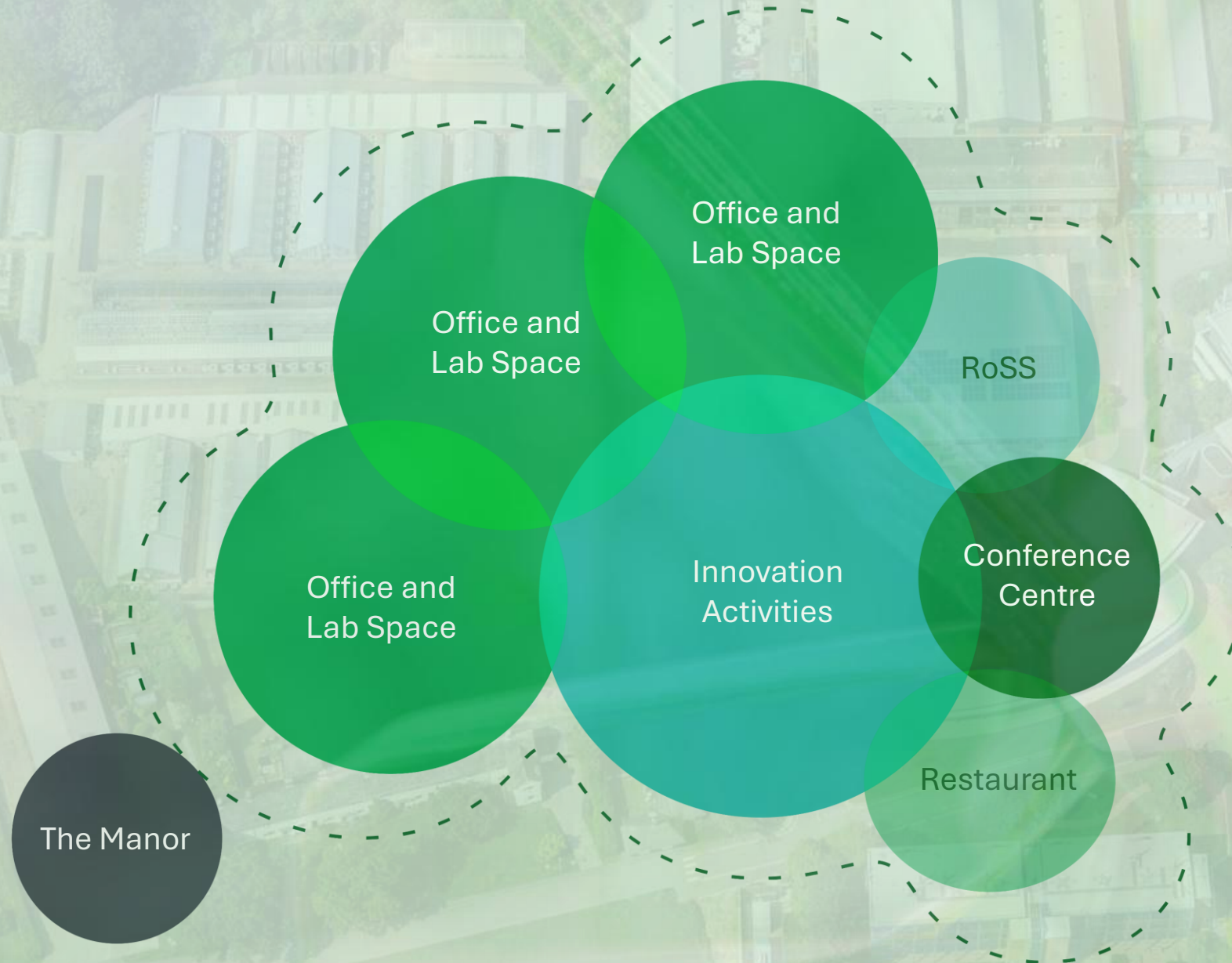
Learnings of a Campus Operation

- The speed at which start ups need to scale or retract
- Various communication methods are required
- Clear on our innovation space
- The variety of cultures and behaviours and diversity
- The specialist kit, equipment, resources that could pose a threat

The Next 10 Years

- The Institute is redefining the science focus
- Improve the site at Harpenden, Brooms Barn and North Wyke
- Increase sustainable and 'Net Zero' buildings
- Develop a new brand and re-position in the UK market
- To increase innovation, collaboration and outputs
- To rebrand and reposition ourselves in the UK Ag-Tech Space
- To develop a campus and a regional cluster

REL Business Model Ambition



Serving Community Members

- ✓ Start up
- ✓ Scale up
- ✓ Maturing (to establish)
- ✓ Spin out
- ✓ SME



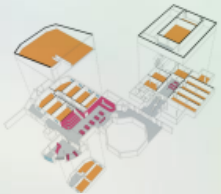
- 1 New Reception & Entrance Cafe



- 2 Restaurant converted to Labs



- 3 Conversion of Auditorium



- 4 Renovation of Meeting Rooms



Campus Master Plan



- 5 Conference Centre – Fowden Renovation



- 6 North Building Renovation – Labs & Offices



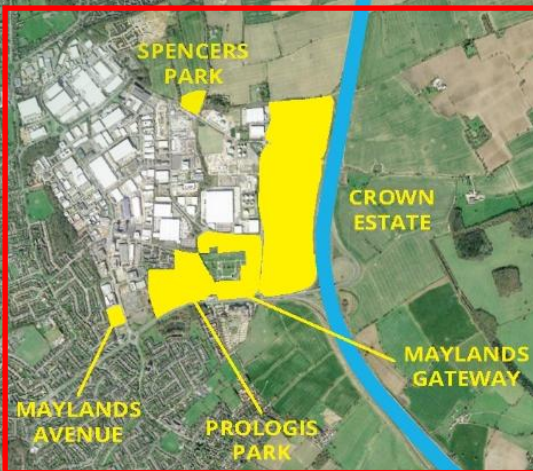
- 7 New Science Centre – Ninings Site



- 8 Replace Ogg / Bawden Buildings



Building a Regional Cluster



TOWARDS
LONDON LUTON
AIRPORT

ROTHAMSTEAD
RESEARCH

HARPENDEN

ST ALBANS

For Regional Growth


The more tenants we attract to the regional cluster, the greater the region's growth potential. This will lead to:

- ✓ A more skilled workforce
- ✓ Increased job creation
- ✓ Expanded facilities to support population growth



Developing bioscience research and innovation clusters around BBSRC strategically funded Institutes and beyond...



A photograph of a forest floor covered in a dense carpet of small, light blue flowers, likely bluebells. Several tree trunks of varying heights and thicknesses are visible in the background, creating a sense of depth. The lighting is soft and diffused, typical of a forest interior.

Thank you for your time